

Inventory Reduction 📍 12952 26th St SE, Oriska, ND

# AUCTION

TIMED ONLINE

Steffes Group, Inc.



Built on Trust.

OPENS: Monday, November 30

**CLOSES: MONDAY, DECEMBER 7 | 10AM** 2020

PREVIEW: Monday, November 23 – Monday, December 7 | **LOADOUT:** Monday, December 7 – Friday, December 18

### COMBINE

**2005 John Deere 9760, STS, Contour-Master, deluxe cab, John Deere ATU, auto steer, brown box display, TouchSet, long auger, hopper ext., fine cut chopper, 600/65R38 tires, 520/85R42 duals, 2 yrs. on long block overhaul, 2,546 sep. hrs., 3,793 engine hrs., S/NH097605711156**

### HEADS & HEADER TRAILER

**2008 John Deere 635F flex head, 35", 1-1/2" cut, fore/aft, CWS air bar, full finger auger, stubble lights, S/NH00635F731866**

**2008 Fantini chopping corn head, 6x30", S/N08923**

**John Deere 853 all crop head, 8x30", high dividers, back screen, S/N390528H**

**John Deere 653 head, platform, dividers & auger, no snouts, for parts, S/N394013H**

**2017 FW Mfg. tandem axle header trailer, 37', 6-wheel, front dollies, fenders**

### WHEEL LOADER & SKID STEER LOADER

**John Deere 644C articulated wheel loader, 4WD, cab w/heat, shuttle shift, 3 yd. bucket, 20.5-25 tires, 8,077 hrs.**

**2007 John Deere 325 skid steer, ROPS, aux. hyd., hand & foot controls, 12-16 tires, 3,696 hrs., S/NT00325A135610**

**Pallet forks for skid steer loader, 42"**

### TILLAGE EQUIPMENT

**John Deere 2410 chisel plow, 43", single pt. depth, 4" double pointed shovels, walking tandems across, floating hitch, HD 3-bar harrow, 11L-15 tires, S/NN02410X010079**

**Summers Series 10 diamond disc, 28", 23-1/2" smooth blades, scrapers, center rear shank, 280/70R15 center wheels**

### TILLAGE EQUIPMENT

**w/8-bolt hubs, 11L-15 tires on rest of machine, S/NV0705**

### SEMI TRACTORS, FLATBED & TENDER TRUCKS

**2005 IHC 9200i tandem axle, day cab, M11 Cummins, 370 hp., 10 spd., engine brake, sliding 5th wheel, power divider, 295/85R22.5 tires, 900,000 miles, engine completely rebuilt at Moorhead AVTI**

**2001 IHC 4900 single axle flatbed, DT466E engine, 6 spd., 22'x8" flatbed, tommy lift, sides, radio, 11R22.5 tires, 191,563 miles, 600 miles on overhaul**

**1984 IHC 9070 tri-axle cabover truck w/sleeper, twin screw, 9 spd., Willmar 10 ton tender box, rear auger, 295/75R22.5 tires, 880,022 miles**

### PICKUP & VEHICLE

**2001 Ford F150, ext. cab, 4-door, short box, V8, automatic, 4WD**

**2012 Chevrolet Traverse, AWD, 3.6 VVT, automatic, cruise, backup monitor, 3rd row seating, heated cloth seats, 132,900 miles**

### HOPPER BOTTOM TRAILER & CHEMICAL TENDER

**2007 Tipte Super Hopper, tandem axle hopper bottom, 40'x96"x66", ag hoppers, electric roll tarp, front & rear catwalks & ladders, 11R24.5 dual tires**

**1989 Broad Systems RSI single axle van trailer, 28', (1) 2,000 gal. & (1) 1,600 gal. poly tanks, mix cone, 2" pump, rear ladder, 11R24.5 tires**

### SPREADER

**1996 Ag-Chem TerraGator 1903, dry fertilizer spreader, 60' air spreader boom, Cat engine, 13 spd., Dickey John controls, foam marker, 73x44.00-32 tires, 6,476 hrs.**

### HAY EQUIPMENT

**2015 New Holland RB560 round baler, specialty crop, 5x6 bales, poly pickup bands, net/twine wrap, crop cutter, S/NYFN181028**

**John Deere 955 mower conditioner, 16', disc cutter, rubber crimpers, 31x13.5-15 tires, S/NE00955R129004**

### AUGERS

**Westfield MK130-111 Plus, auger, 111"x13", drive over w/swing away pit, S/N199555**

**Westfield MK100-71 auger, 71"x10", mechanical swing auger**

### SCRAPER & ROCKPICKER

**Midland scraper, 6 yd., hyd. dump, 11L-15 tires**

**Summers 700 reel-type rockpicker, 16.5-16.1 tires, S/NK0426**

### OTHER EQUIPMENT

**2012 Bush Hog 1215L batwing mower, 15', 1000 PTO, H29x9.0-15 aircraft tires, S/N00877**

**Dakon gravity wagon, 250 bu., 6 ton running gear, 15" tires**

**Precision Planting 725257, 20/20 SeedSense monitor, S/N8215040**

**John Deere F910 lawn tractor, 54" front deck, hydro, hand controls, 2,528 hrs., needs work, does not start**

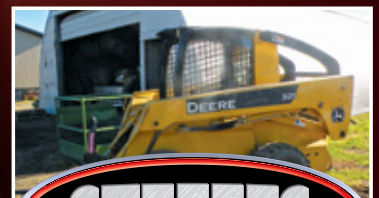
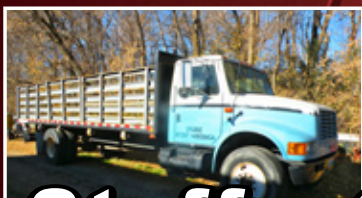
### OIL BAR & MISC. TIRES

**Oil bar, (2) compartment, 120 gal., valves (8) 800/70R30 tires 520/85R46 tire**



**GARY BAASCH | 701.490.0679**

or at Steffes Group, Gregg Holte, 218.790.1705 or Dave Krostue, 218.779.6865



**SteffesGroup.com**

Steffes Group, Inc., 2000 Main Avenue East, West Fargo, ND 58078 | 701.237.9173



TERMS: All items sold as is where is. Payment of cash or check must be made sale day before removal of items. Statements made auction day take precedence over all advertising. \$35 documentation fee applies to all titled vehicles. Titles will be mailed. Canadian buyers need a bank letter of credit to facilitate border transfer. **Scott Steffes ND81**

